

TYPICAL SCREEN DOOR INSTALL DIAGRAM

KEY:

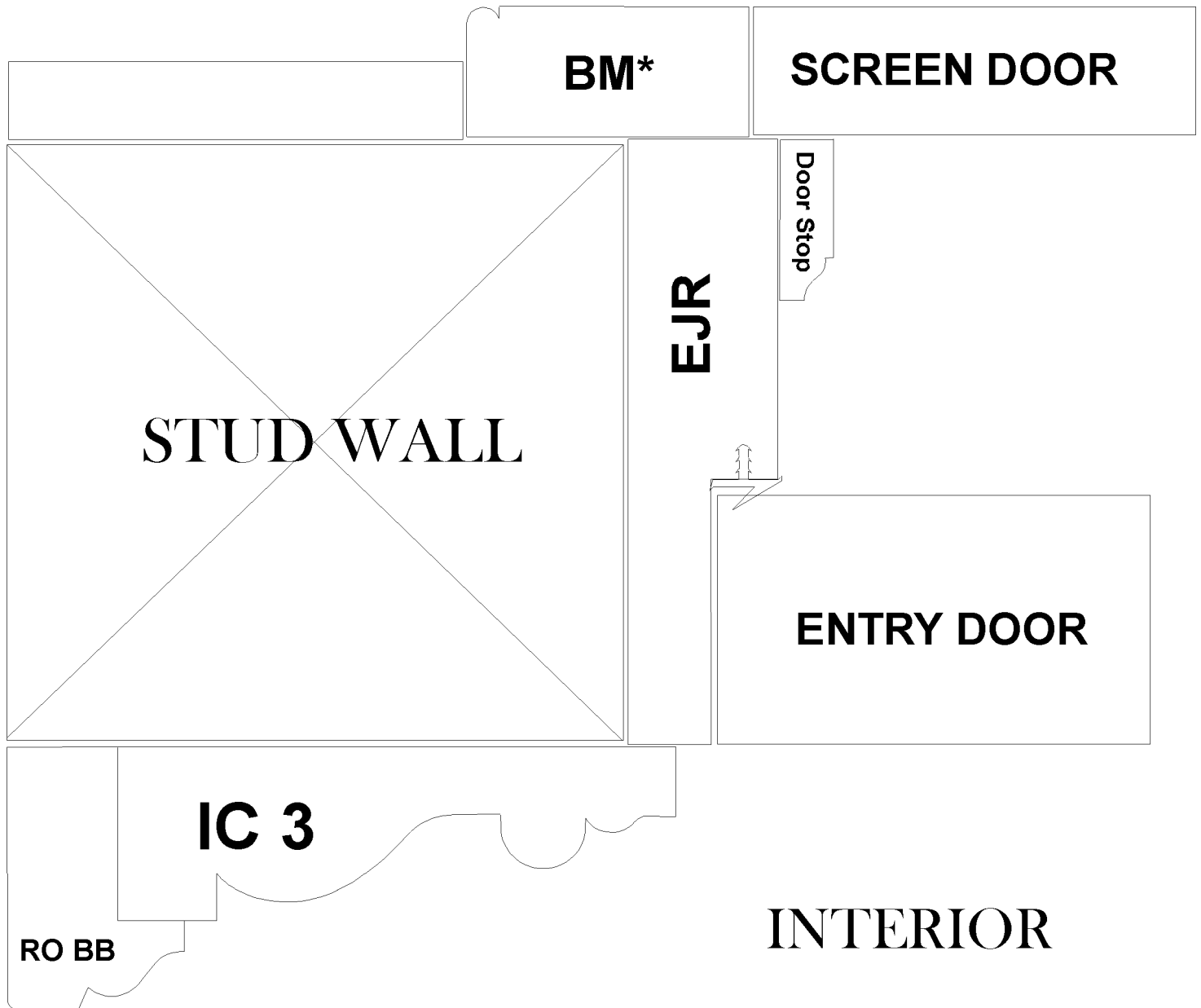
BM* = Brick Molding; Screen Doors Typically hang inside of the exterior trim, also known as brick molding
NOTE: Not all Exterior Trim (BM) looks like this; this is just for example.

EJR = Entry Door Jamb; Screen Doors butt up against a small portion of the EJ, when hanging inside of the BM*

Door Stop = Applied to exterior door jamb on both sides & header.

Door stops with seals provide a sealable point for your storm door to close against.

EXTERIOR



INTERIOR